

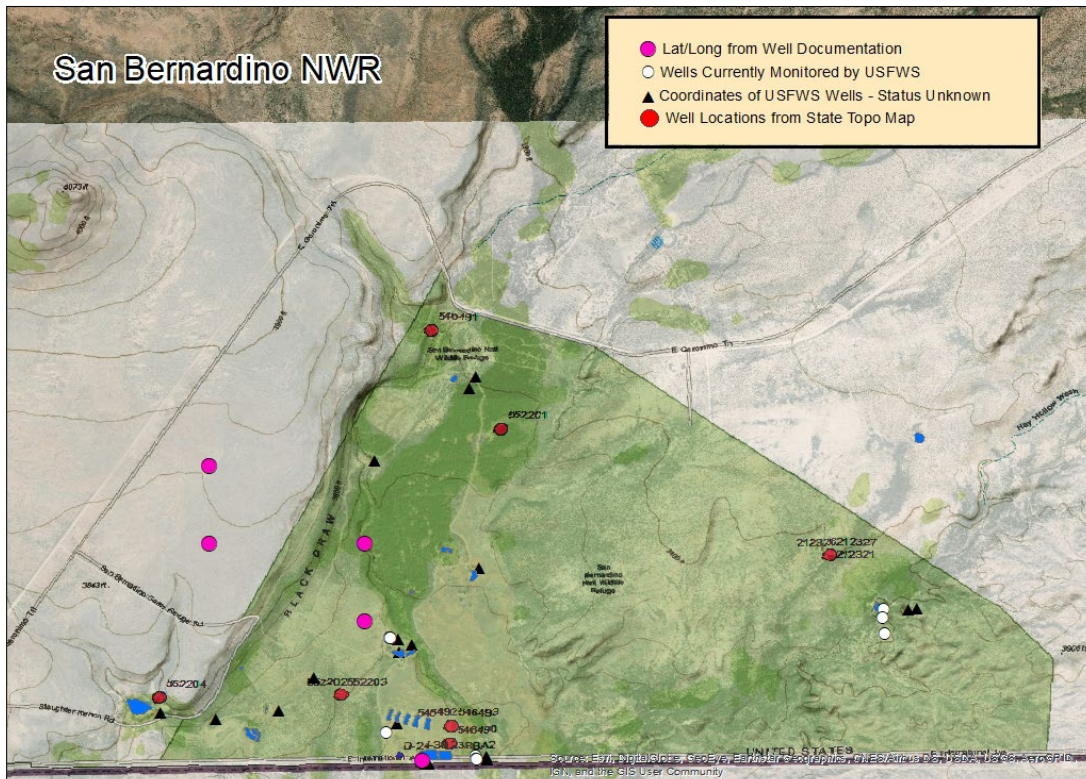
From: [Walker, Cassondra M](#)
To: [Radke, Bill](#); [Harden, Tasha](#)
Subject: Fwd: [EXTERNAL] Fwd: Inventory and Measure San Bernardino Wildlife Refuge
Date: Thursday, November 7, 2019 10:11:25 AM
Attachments: [image.png](#)
[image.png](#)
[212326.pdf](#)
[212327.pdf](#)
[552201.pdf](#)
[55-589794.pdf](#)
[212321.pdf](#)
[552203.pdf](#)
[552202.pdf](#)
[552204.pdf](#)
[312003109154601.pdf](#)
[StateLocations for SanB wells.pdf](#)

Hey Bill,

I wanted to give you a status update on the state's efforts to monitor our wells. I was contacted by a guy named Aaron to come monitor the wells. We agreed to go out on Friday. He sent me info on the wells that they are wanting to monitor (below in email chain). I have two topo maps (one for each refuge) with well locations on them and also some well documentation from when the wells were drilled. I georeferenced the topo map for San B so I could try to get a better idea of what wells they want to monitor. After doing this, I added the wells that I monitor, the coordinates of other wells that used to be on the refuge, and coordinates from the well documentation that I could find. I created a map (below, and attached) and as you can see there is a lot of discrepancies in where wells are located. I'm fairly certain that one of the wells is Spring Snail well, but the rest I'm not really sure. Do you happen to know of any other secret well locations that might explain the locations that they have.

For Leslie Canyon, I do not have a map because I do not have imagery associated with a reference system to use to georeference their topo map. However, from the coordinates it looks like 99Bar and BarBoot are on the list.

After talking with Tasha, I'm going to explain to them that I don't know where all of these wells are and see what they want to do. Hopefully, they will be fine with just monitoring the wells I already check. I'm happy to help them search for these other wells, but I don't think it will do much good. Do you have any further guidance on how you want me to handle this?



----- Forwarded message -----

From: **Aaron Stolley** <adstolley@azwater.gov>

Date: Wed, Nov 6, 2019 at 6:44 PM

Subject: [EXTERNAL] Fwd: Inventory and Measure San Bernardino Wildlife Refuge

To: cassandra_walker@fws.gov <cassandra_walker@fws.gov>

----- Forwarded message -----

From: **Teri Davis** <tddavis@azwater.gov>

Date: Tue, Nov 5, 2019 at 1:02 PM

Subject: Inventory and Measure San Bernardino Wildlife Refuge

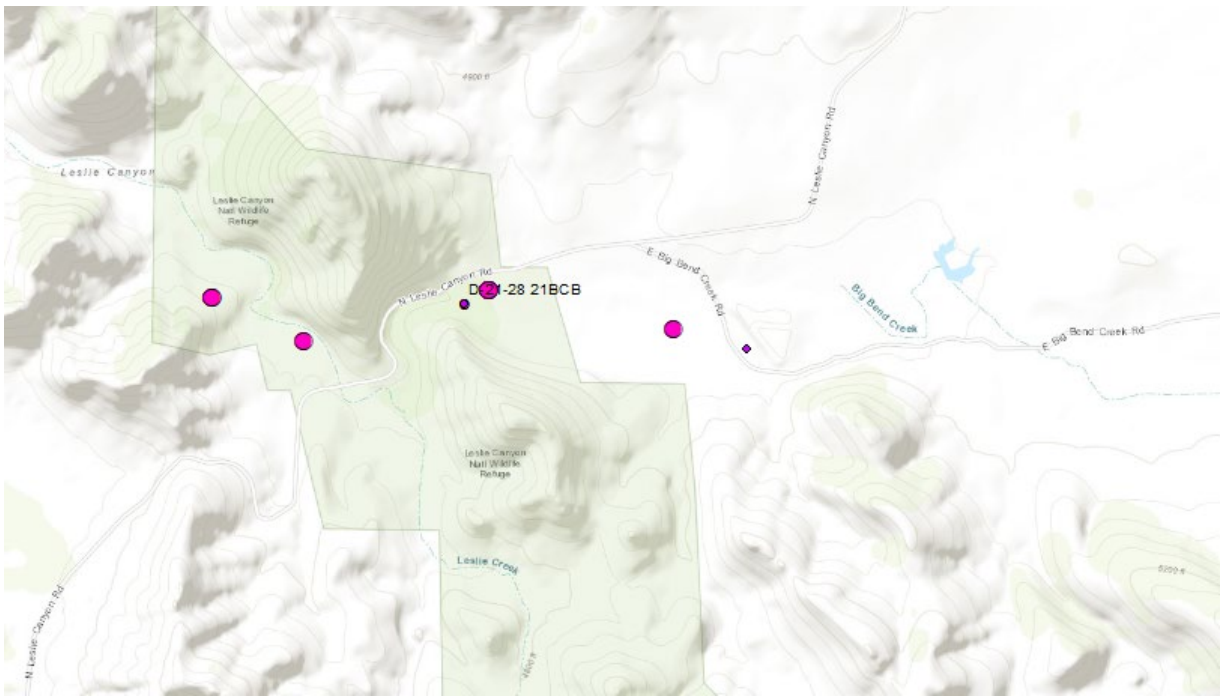
To: Aaron Stolley <adstolley@azwater.gov>

CC: Scott Stuk <sstuk@azwater.gov>, James Dieckhoff <jdieckhoff@azwater.gov>, Paul A.

Ivanich <paivanich@azwater.gov>

Hi Aaron,

If you have time, please inventory and measure the following wells; image records and snip



--

Teri D. Davis R.G., Manager
Field Services Section, Hydrology Division
Arizona Department of Water Resources
[1110 W Washington St Suite 310](#)
[Phoenix, AZ 85007](#)
(602) 679-0932 cell
tddavis@azwater.gov

--

Aaron Stolley
Basic Data Unit Team Lead
Arizona Department of Water Resources
Office: (602) 771-8734
Cell: (602) 525-0442



--

Cassondra Walker, PhD
US Fish and Wildlife Service
Refuge Biologist
San Bernardino and Leslie Canyon NWR

PO Box 3509
7628 N Hwy 191
Douglas AZ 85608
Office: 520-364-2104x105
Cell: 520-368-6010
Fax: 520-364-2130